

Kentucky

State High School Basketball Tournament

LOUISVILLE KENTUCKY

*74th Boys'
Sweet Sixteen*



Official Statistics
Game Fourteen
Fairdale vs. Bowling Green

Official Program

RUPP ARENA • LEXINGTON, KENTUCKY • MARCH 13-16, 1991 • \$2.00



OFFICIAL NCAA BASKETBALL BOX SCORE: *** FINAL ***

Date: 03-16-91 Site: Lexington, Ky.

VISITORS (Last Name, First)

NO.	FAIRDALE	Tot FG		3-POINT		FT	FTA	Rebounds			PF	TP			A	TO	BLK	S	TIME
		FG	FGA	FG	FGA			OFF	DEF	TOT									
04	Brown, Jermaine	10	13	0	0	0	0	5	7	12	3	20			3	2	3	0	31:09
22	Morris, Maurice	5	10	0	3	3	6	2	6	8	3	13			5	4	0	1	30:28
25	Comstock, Tim	1	3	0	0	1	2	2	1	3	3	3			2	0	0	0	16:07
05	Thompson, Jeff	0	1	0	1	4	4	0	2	2	4	4			2	2	0	1	31:09
15	Turner, Carlos	6	14	1	4	4	4	1	1	2	3	17			1	2	0	0	31:21
33	Bishop, Sean	4	7	0	0	0	0	0	4	4	0	8			2	1	0	0	16:07
10	Gardner, Jason	0	0	0	0	2	2	0	0	0	0	2			0	0	0	0	0:51
12	Morris, Rashawn	0	1	0	0	0	0	0	0	0	0	0			0	0	0	0	0:51
11	Hicks, David	0	0	0	0	0	0	0	0	0	0	0			0	0	0	0	0:39
32	Votaw, Brad	0	0	0	0	0	0	0	1	1	0	0			0	0	0	0	0:39
34	Taylor, Leland	0	0	0	0	0	0	0	0	0	1	0			0	0	0	0	0:39
TEAM REBOUNDS (INCLUDED IN TOTALS)										3	3								
TOTALS		26	49	1	8	14	18	10	25	35	17	67			15	11	3	2	160

TOTAL FG 1st HALF 5/15 33.3% 2nd HALF 21/34 61.8% GAME 26/ 49 53.1% DEADBALL
 3-POINT FG 1st HALF 0/ 4 0.0% 2nd HALF 1/ 4 25.0% GAME 1/ 8 12.5% REBOUNDS 2
 FREE THROWS 1st HALF 2/ 2 100.0% 2nd HALF 12/16 75.0% GAME 14/ 18 77.8%

HOME (Last Name, First)

NO.	BOWLING GREEN	Tot FG		3-POINT		FT	FTA	Rebounds			PF	TP			A	TO	BLK	S	TIME
		FG	FGA	FG	FGA			OFF	DEF	TOT									
20	Dunn, Mitchell	6	15	0	0	3	5	2	1	3	3	15			4	2	0	1	31:21
40	Clark, David	1	3	0	0	0	0	0	3	3	3	2			1	1	0	1	29:56
34	Evans, Jody	11	17	0	1	1	2	6	6	12	4	23			0	1	0	0	31:09
12	Barnett, Benji	2	14	1	2	6	10	2	2	4	4	11			3	2	0	0	29:52
32	Cullom, Cornell	0	3	0	2	0	0	0	2	2	1	0			1	2	0	1	31:21
24	Willard, Kevin	0	1	0	1	0	0	0	0	0	1	0			0	0	0	0	3:21
54	Mason, Derek	0	1	0	0	1	2	1	0	1	0	1			0	0	0	0	0:51
50	Caffey, Brad	0	0	0	0	0	0	0	1	1	0	0			0	0	0	0	0:51
22	Lawless, Pat	0	1	0	0	0	0	0	0	0	0	0			0	0	0	0	0:39
30	Ramey, Randy	0	0	0	0	0	0	0	0	0	0	0			0	0	0	0	0:39
TEAM REBOUNDS (INCLUDED IN TOTALS)										4	1	5	1						
TOTALS		20	55	1	6	11	19	15	16	31	17	52			9	8	0	3	160

TOTAL FG 1st HALF 8/13 61.5% 2nd HALF 12/42 28.6% GAME 20/ 55 36.4% DEADBALL
 3-POINT FG 1st HALF 0/ 1 0.0% 2nd HALF 1/ 5 20.0% GAME 1/ 6 16.7% REBOUNDS 2
 FREE THROWS 1st HALF 2/ 2 100.0% 2nd HALF 9/17 52.9% GAME 11/ 19 57.9%

OFFICIALS: Henry Bell, Barry Barnes, K. Catron-Alt.

Technicals:

BOWLING GREEN Bench - 1;

SCORE BY PERIODS

FAIRDALE	12	18	19	18	=	67
BOWLING GREEN	18	10	10	14	=	52

Attendance: 15,640

COMMENTS: POINTS OFF TURNOVERS

FAIRDALE 6 BOWLING GREEN

14 FAIRDALE

SECOND CHANCE POINTS

12 BOWLING GREEN

10

FAIRDALE "Bulldogs" vs BOWLING GREEN "Purples"
1st Half Play by Play

PAGE : 1

Tip off at 11:45 a.m. on 03/16/91 at Lexington, Ky.
Produced by the University of Kentucky Stat Crew with FINAL III - a Product of LEXICC

Player	Team	BOWLING GREEN		
Dunn, Mitchell ,Clark, David,Evans, Jody,Barnett, Benji ,Cullom, Cornell Ball to Purples				
1-1	100%	1-1	100%	Driving Layup by Evans, Jody Assist by Barnett, Benji
2-2	100%	3-3	100%	12 ft Lane Jump shot by Dunn, Mitchell 10 ft Lane Jump shot by Dunn, Mitchell Foul on Dunn, Mitchell
2-2	100%	2-2	100%	Barnett, Benji 2 Free Throws - made both Foul on Evans, Jody
3-3	100%	4-5	80.0%	7 ft Lane Bank by Dunn, Mitchell
2-3	66.6%	5-7	71.4%	4 ft Lane Bank by Evans, Jody Assist by Dunn, Mitchell
3-5	60.0%	6-10	60.0%	Follow Layup by Evans, Jody
4-6	66.6%	7-11	63.6%	Layup Alley Oop by Evans, Jody Assist by Dunn, Mitchell
4-4	100%	8-12	66.6%	Fast Break Layup by Dunn, Mitchell

Time	Score	FAIRDALE	Player	Team
Brown, Jermaine,Morris, Maurice,Comstock, Tim,Thompson, Jeff ,Turner, Carlos				
1 7:46	0-2*	Follow Follow by Brown, Jermaine	1-1	100% 1-2 50.0%
1 7:32	*2-2			
1 7:14		Foul on Morris, Maurice	1	1
1 7:05	*4-2			
1 6:49	*6-2			
1 5:59		Foul on Comstock, Tim	1	2
1 5:18	*8-2			
1 5:03	8-4*	Follow Layup by Morris, Maurice	1-2	50.0% 2-7 28.5%
1 4:26	8-6*	Morris, Maurice 2 Free Throws - made both	2-2	100% 2-2 100%
1 4:17	*10-6			
1 3:41	10-8*	15 ft Left Side Jump shot by Turner, Carlos	1-4	25.0% 3-9 33.3%
1 3:35		Foul on Morris, Maurice	2	3
1 3:14	*12-8			
1 2:47		Foul on Comstock, Tim	2	4
1 2:16		Foul on Brown, Jermaine	1	5
1 1:33	*14-8			
1 1:23	14-10*	6 ft Left Side Driving by Brown, Jermaine Assist by Turner, Carlos	2-3	66.6% 4-13 30.7%
1 1:05	*16-10		1	1
1 0:44	*18-10			
1 0:26	18-12*	Jump shot Layup by Turner, Carlos	2-6	33.3% 5-15 33.3%

FAIRDALE "Bulldogs" vs BOWLING GREEN "Purples"
1st Half Play by Play

PAGE : 2

Tip off at 11:45 a.m. on 03/16/91 at Lexington, Ky.
Produced by the University of Kentucky Stat Crew with FINAL III - a Product of LEXICO

Player	Team	BOWLING GREEN	Time	Score	FAIRDALE	Player	Team
Willard, Kevin ,Dunn, Mitchell ,Cullom, Cornell,Evans, Jody,Clark, David			Brown, Jermaine,Morris, Maurice,Comstock, Tim,Thompson, Jeff ,Turner, Carlos				
Ball to Purples							
5-7	71.4%	9-14 64.2%	2	7:39	*20-12		
3		4					
Layup Alley Oop by Evans, Jody			2	7:16	20-14*	4 ft Lane Bank by Morris, Maurice	2-5 40.0%
Assist by Dunn, Mitchell						Assist by Comstock, Tim	6-16 37.5%
Sub In: Barnett, Benji Out: Willard, Kevin			2	6:43			1 2
6-8	75.0%	10-15 66.6%	2	6:09	20-16*	Follow Layup by Brown, Jermaine	3-5 60.0%
4		5	2	5:27	*22-16		7-19 36.8%
12 ft Lane Turnaround by Evans, Jody							
Assist by Dunn, Mitchell			2	5:06	22-18*	Driving Layup by Comstock, Tim	1-3 33.3%
1		3	2	5:00		Assist by Brown, Jermaine	8-20 40.0%
Foul on Barnett, Benji			2	4:44	22-20*	4 ft Lane Jump shot by Brown, Jermaine	4-6 66.6%
						Assist by Morris, Maurice	9-21 42.8%
			2	4:40			1 4
REB: 7 A: 5 BLK: 0 TO: 6 PF: 3			REB: 10 A: 4 BLK: 1 TO: 5 PF: 5				
S: 3 FT: 2-2 100% FG: 10-15 66.6%			S: 1 FT: 2-2 100% FG: 9-21 42.8%				
No. 1 BOWLING GREEN			T I M E - O U T				
7-9	77.7%	11-17 64.7%	2	4:27	*24-20		
Follow Tip by Evans, Jody			2	4:10	24-22*	Driving Dunk by Brown, Jermaine	5-7 71.4%
			2	3:45	24-24*	11 ft Right Side Jump shot by Brown, Jermaine	10-22 45.4%
						Assist by Thompson, Jeff	6-8 75.0%
							11-23 47.8%
							1 5
Technical foul on BOWLING GREEN BENCH			2	3:40			
2		4	2	3:40			
Foul on TEAM			2	3:40	24-25*	Comstock, Tim 2 Free Throws - made 1st missed 2nd	1- 2 50.0%
			2	3:40		Sub In: Bishop, Sean Out: Comstock, Tim	3- 4 75.0%
			2	3:40	24-27*	4 ft Lane Bank by Brown, Jermaine	7-9 77.7%
						Assist by Morris, Maurice	12-24 50.0%
			2	2:54		Foul on Thompson, Jeff	2 6
			2	2:24	*26-27		1 6
8-10	80.0%	12-20 60.0%	2	1:32	26-28*	Morris, Maurice 2 Free Throws - made 1st missed 2nd	3- 4 75.0%
1		5	2	1:08			4- 6 66.6%
8 ft Right Base Line Turnaround by Evans, Jody			2	0:41		Foul on Morris, Maurice	3 7
Foul on Clark, David			2	0:41		Sub In: Comstock, Tim Out: Morris, Maurice	
1		6	2	0:41	*27-28		
Foul on Cullom, Cornell			2	0:22	27-30*	14 ft Lane Jump shot by Turner, Carlos	3-7 42.8%
1- 2 50.0%	3- 4 75.0%	Dunn, Mitchell				Assist by Bishop, Sean	13-27 48.1%
2 Free Throws - made 1st missed 2nd							1 7
0-4	00.0%	12-23 52.1%	2	0:00			
3 pt 20 ft Circle Jump shot by Barnett, Benji , missed			2	0:00			
0-1	Tot-1	0-1 Tot-12	2	0:00		Foul on Turner, Carlos	1 8
Rebound by Barnett, Benji			2	0:00			
3- 4 75.0%	4- 6 66.6%	Barnett, Benji	2	0:00	*28-30		
2 Free Throws - made 1st missed 2nd			2	0:00		Rebound by Bishop, Sean	D-1 Tot-1 D-1 Tot-16

OFFICIAL NCAA BASKETBALL BOX SCORE: * OFFICIAL FIRST HALF *
 Date: 03-16-91 Site:Lexington, Ky.

VISITORS (Last Name, First)

NO.	FAIRDALE	Tot FG		3-POINT		FT	FTA	Rebounds			PF	TP			A	TO	BLK	S	TIME
		FG	FGA	FG	FGA			OFF	DEF	TOT									
04	Brown, Jermaine	7	9	0	0	0	0	3	3	6	1	14			1	2	1	0	16:00
22	Morris, Maurice	2	7	0	3	3	4	1	2	3	3	7			2	3	0	1	15:19
25	Comstock, Tim	1	3	0	0	1	2	2	0	2	2	3			1	0	0	0	13:01
05	Thompson, Jeff	0	1	0	1	0	0	0	1	1	1	0			1	2	0	1	16:00
15	Turner, Carlos	3	7	0	2	0	0	1	1	2	1	6			1	0	0	0	16:00
33	Bishop, Sean	0	0	0	0	0	0	0	2	2	0	0			1	0	0	0	3:40
TEAM REBOUNDS (INCLUDED IN TOTALS)																			
TOTALS		13	27	0	6	4	6	7	9	16	8	30			7	7	1	2	80

TOTAL FG 1st HALF 5/15 33.3% 2nd HALF 8/12 66.7% GAME 13/ 27 48.1% DEADBALL
 3-POINT FG 1st HALF 0/ 4 0.0% 2nd HALF 0/ 2 0.0% GAME 0/ 6 0.0% REBOUNDS 1
 FREE THROWS 1st HALF 2/ 2 100.0% 2nd HALF 2/ 4 50.0% GAME 4/ 6 66.7%

HOME (Last Name, First)

NO.	BOWLING GREEN	Tot FG		3-POINT		FT	FTA	Rebounds			PF	TP			A	TO	BLK	S	TIME
		FG	FGA	FG	FGA			OFF	DEF	TOT									
20	Dunn, Mitchell	4	7	0	0	1	2	0	1	1	1	9			4	2	0	1	16:00
40	Clark, David	0	1	0	0	0	0	0	0	0	1	0			0	0	0	1	16:00
34	Evans, Jody	8	10	0	0	0	0	2	5	7	1	16			0	1	0	0	16:00
12	Barnett, Benji	0	4	0	1	3	4	1	1	2	1	3			1	2	0	0	14:43
32	Cullom, Cornell	0	1	0	1	0	0	0	2	2	1	0			0	2	0	1	16:00
24	Willard, Kevin	0	0	0	0	0	0	0	0	0	0	0			0	0	0	0	1:17
TEAM REBOUNDS (INCLUDED IN TOTALS)																			
TOTALS		12	23	0	2	4	6	3	9	12	6	28			5	7	0	3	80

TOTAL FG 1st HALF 8/13 61.5% 2nd HALF 4/10 40.0% GAME 12/ 23 52.2% DEADBALL
 3-POINT FG 1st HALF 0/ 1 0.0% 2nd HALF 0/ 1 0.0% GAME 0/ 2 0.0% REBOUNDS 0
 FREE THROWS 1st HALF 2/ 2 100.0% 2nd HALF 2/ 4 50.0% GAME 4/ 6 66.7%

OFFICIALS: Henry Bell, Barry Barnes, K. Catron-Alt.

Technical:

BOWLING GREEN Bench - 1;

SCORE BY PERIODS

FAIRDALE 12 18 = 30
 BOWLING GREEN 18 10 = 28

Attendance: 15,640

COMMENTS: POINTS OFF TURNOVERS

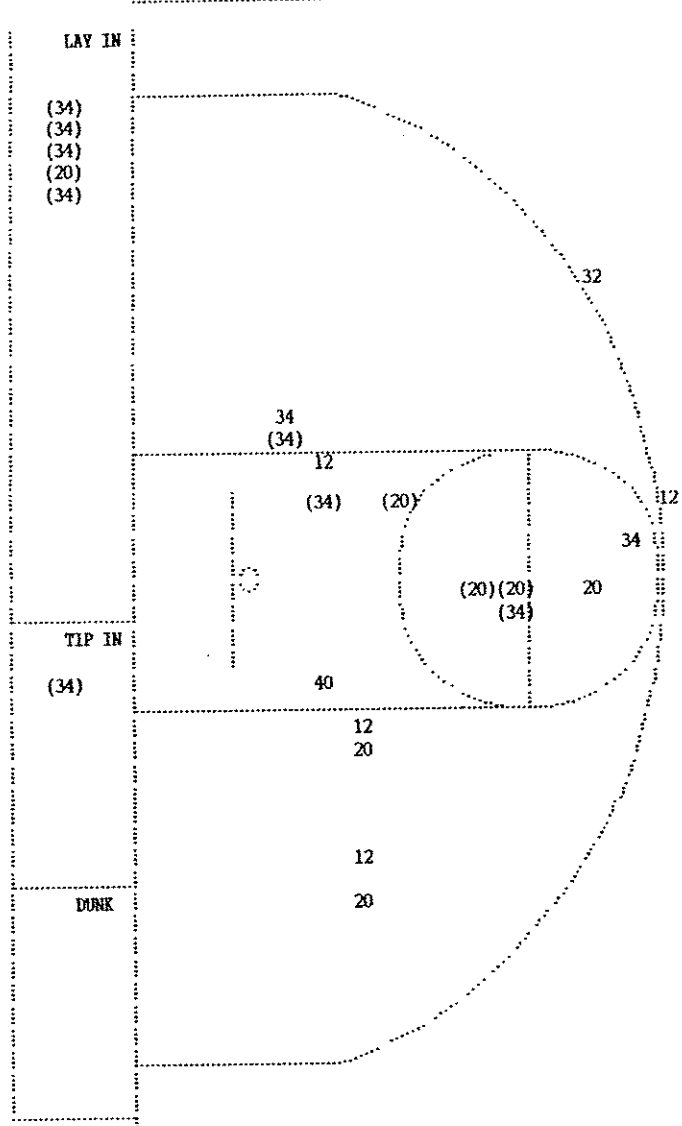
FAIRDALE 6 BOWLING GREEN

8 FAIRDALE

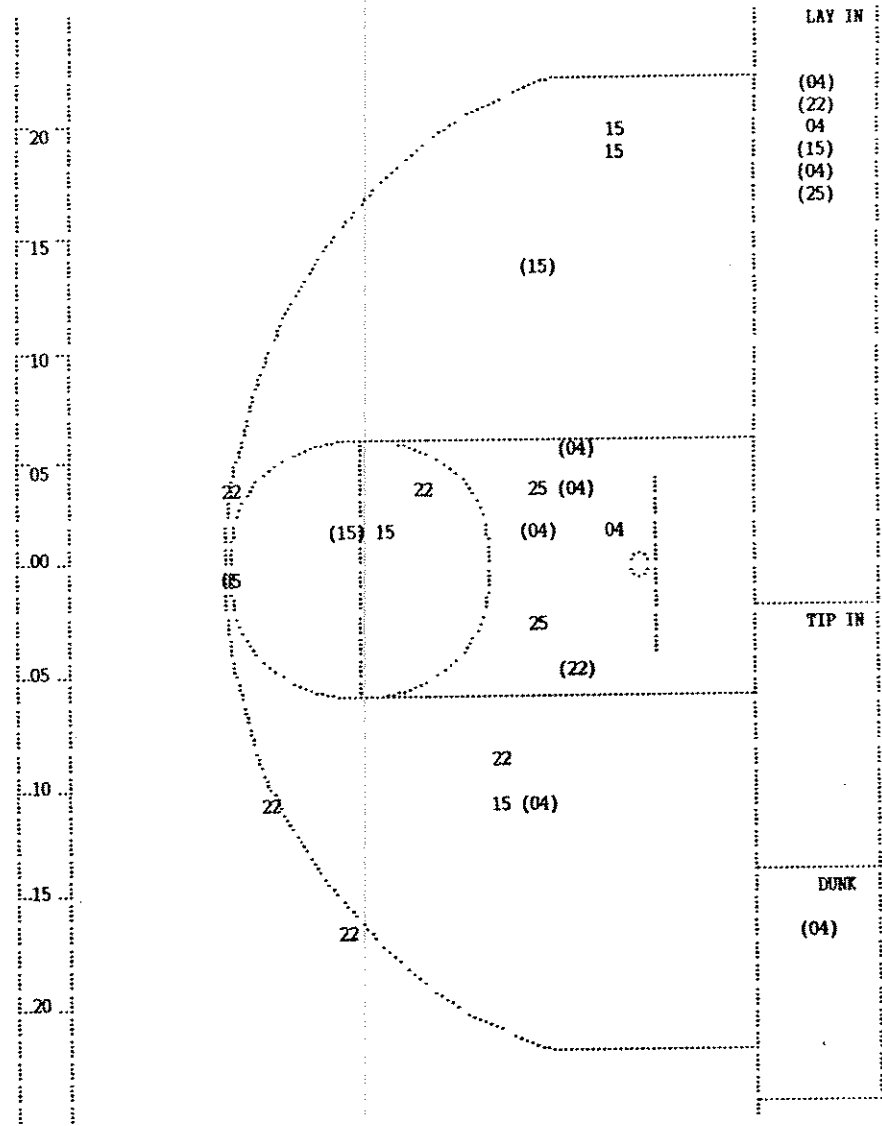
SECOND CHANCE POINTS

8 BOWLING GREEN

5



BOWLING GREEN		Player	
Player	Player	Player	Player
20 - Dunn, Mitc	4 / 7 57.1%		
40 - Clark, Dav	0 / 1 0.0%		
34 - Evans, Jod	8 / 10 80.0%		
12 - Barnett, B	0 / 4 0.0%		
32 - Cullom, Co	0 / 1 0.0%		
Layups	1-9 Ft	10-15 Ft	Over 15 Ft 3 Pointers Total
6 / 6	3 / 8	3 / 5	0 / 2 0 / 2 12 / 23
100.0%	37.5%	60.0%	0.0% 0.0% 52.2%



FAIRDALE		Player	
Player	Player	Player	Player
04 - Brown, Jer	7 / 9 77.7%		
22 - Morris, Ma	2 / 7 28.5%		
25 - Comstock, 1	3 / 3 33.3%		
05 - Thompson, 0	1 / 1 0.0%		
15 - Turner, Ca	3 / 7 42.8%		
Layups	1-9 Ft	10-15 Ft	Over 15 Ft 3 Pointers Total
6 / 7	4 / 7	3 / 7	0 / 6 13 / 27
85.7%	57.1%	42.9%	0.0% 48.1%

FAIRDALE				BOWLING GREEN			
Player	Team	Time	Score	Player	Team	Time	Score
Dunn, Mitchell ,Clark, David				Evans, Jody, Barnett, Benji ,Cullom, Cornell			
Ball to Purples				Ball to Purples			
1-1	100%	1-2	50.0%	15 ft Left Angle Jump shot by Clark, David			
1-2	50.0%	1-2	50.0%	Evans, Jody, 2 Free Throws missed 1st made 2nd			
1		1		Foul on Clark, David			
1-2	50.0%	2-5	40.0%	6 ft Lane Driving by Dunn, Mitchell			
1-1	100%	3-6	50.0%	Fast Break Layup by Evans, Jody			
1		1		Assist by Barnett, Benji			
REB: 2 A: 1 BLK: 0 TO: 0 PF: 1				REB: 3 A: 6 BLK: 0 TO: 0 PF: 2			
S: 0 FT: 1-2 50.0% FG: 3-7 42.8%				S: 0 FT: 0-0 00.0% FG: 6-7 85.7%			
No. 1 BOWLING GREEN TIME - O U T							
1-2	50.0%	2-4	50.0%	Barnett, Benji , 2 Free Throws made 1st missed 2nd			
2		2		Foul on Clark, David			
1		1		Player Control Foul Clark, David			
1-4	25.0%	4-10	40.0%	4 ft Lane Bank by Barnett, Benji			
1		3		Foul on Barnett, Benji			

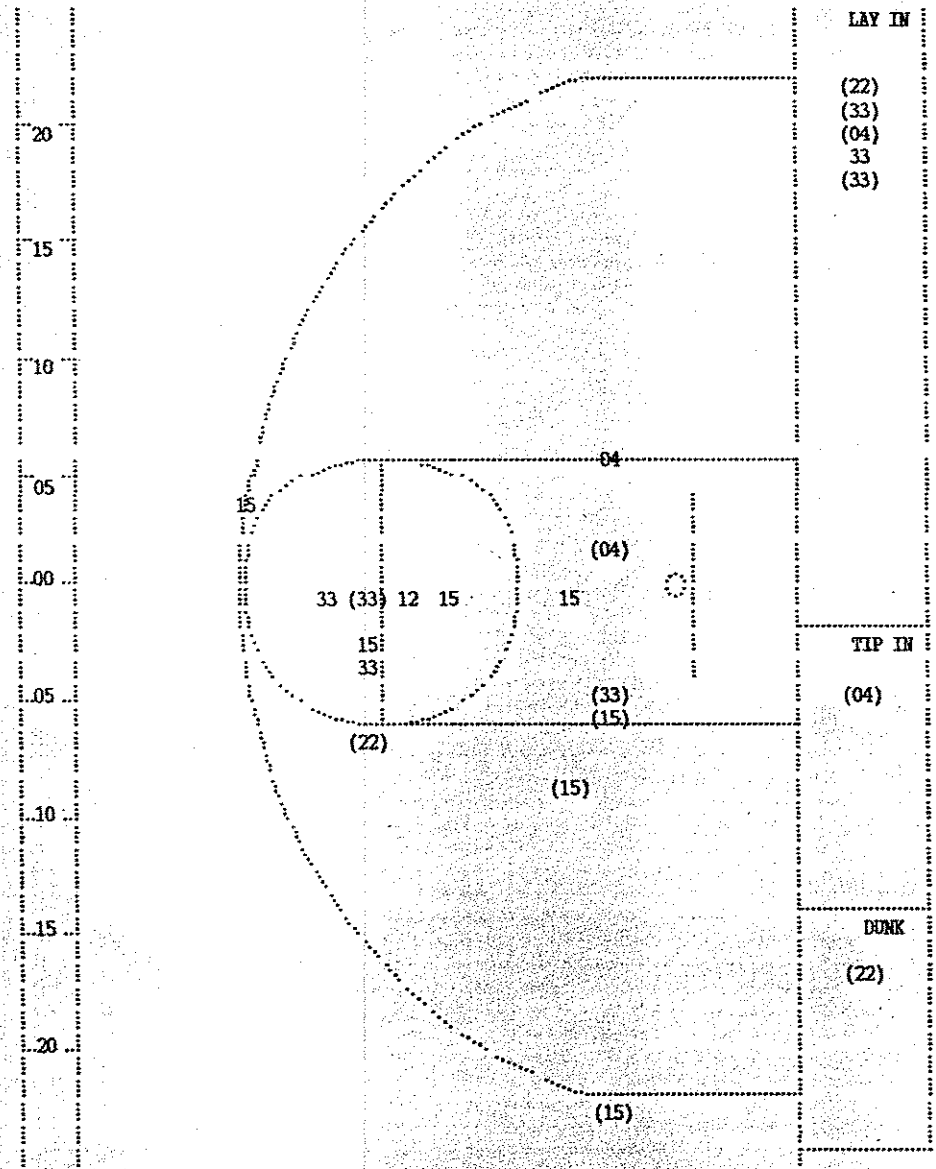
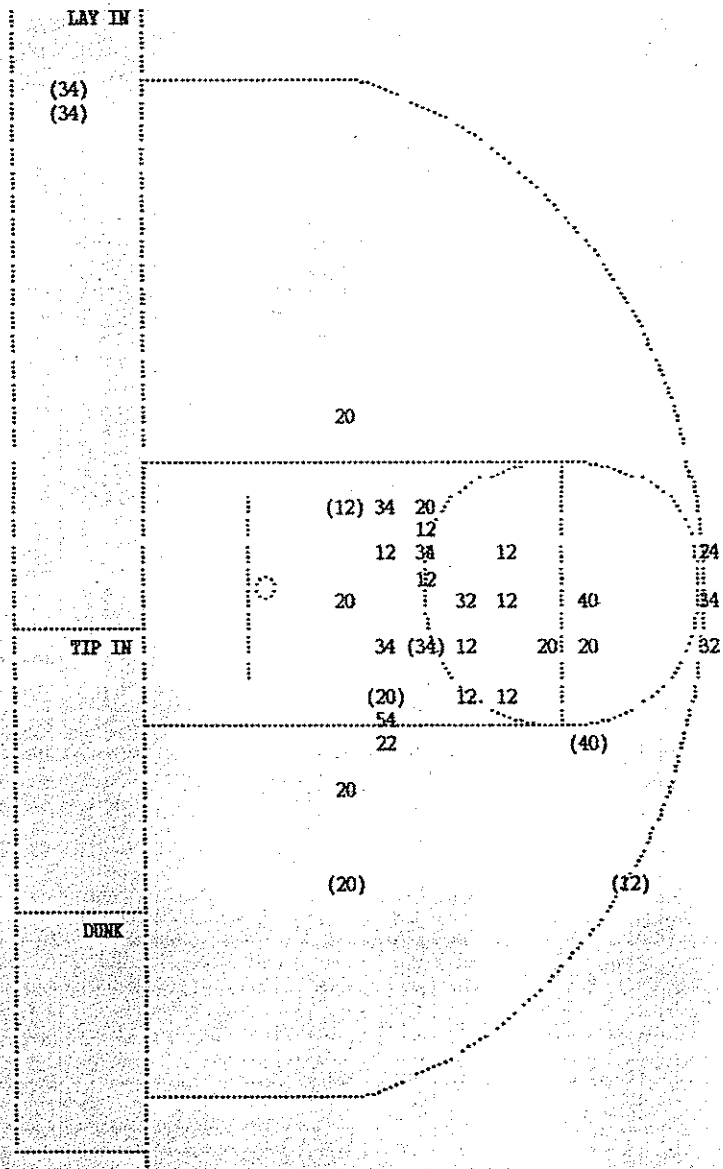
Player	Team	BOWLING GREEN		
Dunn, Mitchell ,Clark, David,Evans, Jody,Barnett, Benji ,Cullon, Cornell				
1-1	100%	1-1	100%	6 ft Lane Jump shot by Evans, Jody
1		1		Assist by Clark, David
1		1		Foul on Barnett, Benji
1		2		Foul on Evans, Jody
1		3		Foul on Dunn, Mitchell
1-1	100%	1-1	100%	Barnett, Benji , 1 Free Throw made
2-2	100%	2-2	100%	Barnett, Benji , 1 Free Throw made
1-1	100%	2-3	66.6%	3 pt 20 ft Left Angle Jump shot by Barnett, Benji
2		4		Foul on Evans, Jody
2-4	50.0%	2-4	50.0%	Barnett, Benji , 2 Free Throws missed both
2-2	100%	3-6	50.0%	Layup Alley Oop by Evans, Jody
1		2		Assist by Barnett, Benji
3		5		Foul on Evans, Jody
REB: 7 A: 2 BLK: 0 TO: 0 PF: 5 S: 0 FT: 2-4 50.0% FG: 3-11 27.2%				
1-5	20.0%	4-13	30.7%	12 ft Left Side Jump shot by Dunn, Mitchell
1		3		Assist by Cullon, Cornell
1		6		Foul on Willard, Kevin
2		7		Foul on Barnett, Benji
2-2	100%	4-6	66.6%	Dunn, Mitchell , 2 Free Throws made both
Sub In: Mason, Derek Out: Evans, Jody Sub In: Caffey, Brad Out: Barnett, Benji Dunn, Mitchell , 1 Free Throw missed Foul on Dunn, Mitchell				
2-3	66.6%	4-7	57.1%	
2		8		
Sub In: Lawless, Pat Out: Cullon, Cornell Sub In: Ramey, Randy Out: Dunn, Mitchell				
1-1	100%	5-8	62.5%	Mason, Derek, 1 Free Throw made
1-2	50.0%	5-9	55.5%	Mason, Derek, 1 Free Throw missed

Time	Score	FAIRDALE	Player	Team
Bishop, Sean,Morris, Maurice,Turner, Carlos ,Thompson, Jeff ,Brown, Jermaine				
Ball to Bulldogs				
4 7:43	38-51*	Follow Follow by Brown, Jermaine	1-1	100% 1-2 50.0%
4 7:23	*40-51			
4 7:04				
4 7:00				
4 7:00	40-53*	Turner, Carlos , 2 Free Throws made both	2-2	100% 2-2 100%
4 6:11				
4 5:22		Foul on Thompson, Jeff	1	1
4 5:22	*41-53			
4 5:19		Free Throw Lane Violation on Bishop, Sean	1	1
4 5:19	*42-53			
4 5:11		Out-of-Bounds by Morris, Maurice	1	2
4 4:55	*45-53			
4 4:17				
4 4:17		Morris, Maurice, 2 Free Throws missed both	0-2	00.0% 2-4 50.0%
4 4:07		Foul on Brown, Jermaine	1	2
4 4:07				
4 3:55	45-55*	Fast Break Layup by Bishop, Sean	1-4	25.0% 2-5 40.0%
		Assist by Brown, Jermaine	1	1
		Foul on Thompson, Jeff	2	3
4 3:43				
4 3:43				
4 3:14	*47-55			
4 2:59				
4 2:59	47-57*	Turner, Carlos , 2 Free Throws made both	4-4	100% 4-6 66.6%
4 2:33	47-59*	4 ft Lane Jump shot by Turner, Carlos	1-2	50.0% 3-7 42.8%
4 2:04				
REB: 5 A: 1 BLK: 1 TO: 2 PF: 3 S: 0 FT: 4-6 66.6% FG: 3-7 42.8%				
4 2:04				
4 2:04	47-61*	3 ft Lane Driving by Brown, Jermaine	2-2	100% 4-8 50.0%
4 1:43	*49-61			
4 1:38				
4 1:38	49-63*	Thompson, Jeff , 2 Free Throws made both	2-2	100% 6-8 75.0%
4 1:14				
4 1:14	49-65*	Thompson, Jeff , 2 Free Throws made both	4-4	100% 8-10 80.0%
4 5:1.1		Foul on Turner, Carlos	1	4
4 5:1.1	*51-65			
4 5:1.1		Sub In: Gardner, Jason Out: Morris, Maurice		
4 5:1.1		Sub In: Constock, Tim Out: Brown, Jermaine		
4 5:1.1		Sub In: Morris, Rashaw Out: Thompson, Jeff		
4 5:1.1				
4 5:1.5				
4 39.1				
4 39.1		Sub In: Hicks, David Out: Bishop, Sean		
4 39.1		Sub In: Votaw, Brad Out: Turner, Carlos		
4 39.1				
4 39.1		Sub In: Taylor, Leland Out: Constock, Tim		
4 39.1				
4 39.1	51-67*	Gardner, Jason , 2 Free Throws made both	2-2	100% 10-12 83.3%
4 27.4		Foul on Taylor, Leland	1	5
4 27.4	*52-67			
4 27.9				

2nd Half Play by Play (continued)

Player	Team	BOWLING GREEN		
D-1	Tot-1	D-4	Tot-10	Rebound by Caffey, Brad

4 :00.5



BOWLING GREEN				
Player			Player	
20 - Dunn, Mitc	2/ 8	25.0%	22 - Lawless, P	0/ 1 0.0%
40 - Clark, Dav	1/ 2	50.0%	24 - Willard, K	0/ 1 0.0%
34 - Evans, Jod	3/ 7	42.8%	54 - Mason, Der	0/ 1 0.0%
12 - Barnett, B	2/10	20.0%		
32 - Cullom, Co	0/ 2	0.0%		
Layups	1-9 Ft	10-15 Ft	Over 15 Ft	3 Pointers Total
2 / 2	3 / 18	2 / 8	1 / 4	8 / 32
100.0%	16.7%	25.0%	25.0%	25.0%

FAIRDALE				
Player			Player	
04 - Brown, Jer	3/ 4	75.0%		
22 - Morris, Ma	3/ 3	100.0%		
15 - Turner, Ca	3/ 7	42.8%		
12 - Morris, Ra	0/ 1	0.0%		
33 - Bishop, Se	4/ 7	57.1%		
Layups	1-9 Ft	10-15 Ft	Over 15 Ft	3 Pointers Total
6 / 7	4 / 6	2 / 6	0 / 1	1 / 2 13 / 22
85.7%	66.7%	33.3%	0.0%	50.0%
				59.1%